

WMG ANNUAL MEETING

May 28, 2025

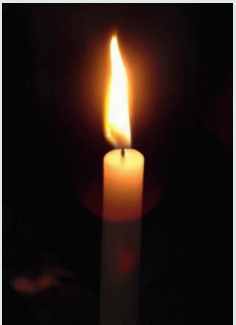




We remember our Chair,

Bonnie Harkness.

We are contributing a donation in her
honor to *Impact 100 DC*



Agenda



- **Thank existing board members**
- **Approve new board slate**
- **Thank committee heads and members**
- **Recruit Web Designers for website refresh**
- **Vote on meeting on MCPS Professional Days**
- **Discuss membership and waitlist numbers**
- **Discuss 2024-25 budget**
- **Close with new business**

Thank you to all **Board Members** for your work this year to keep WMG strong and a special place for all of us.

A very big thank you to **Kirstie Saltsman** for stepping in for Bonnie when we all needed you.

Thanks to **Robin Mesnard** for continuing as
Member at Large

Proposed 2025-26 Board Slate for Approval

Chair	Susan Eisen
Past Chair (temporary)	Kirstie Saltsman
Secretary	Kathy Miljanic
Programming (2)	Fran Rothstein Peggy Jackson
Treasurer	Randi Sadugor
At large (2nd person)	Terry Hanford

We couldn't do it without the amazing teamwork of our COMMITTEES & COMMITTEE HEADS 2025-2026

Snack Set Up:

- **Leslie Van Brandt**
- Aileen Bloom
- Isabel Marbury-Mauro
- Sylvie Pohl
- Jody Bartow
- Beth Rosenthal
- Alissa Fox
- Lynn Olson
- Kay Klass
- Wendy Solovy
- Joan Wolf
- Andrea Mones

A/V:

- **Didi Bild**
- Janet Airis
- Wendy Shay
- Bonnie Beavers

Snack Clean Up:

- **Kristen Mosbaek**
- Jane Holmes
- Susan Eisen
- Susie Riffe
- Kathy Staudaher
- Jane Wykes
- Sheryl Bloch
- Eva Tewel

Web Team:

- **Lynne Joseloff**
- Jennifer Gold
- Pei Pei Cavalier

Greeters' Desk:

- **Judy Rodgers**
- Jane Glickman

Membership Coordinator:

- **Sandie Deighton**
- Lee Malone

List Serv Maestro:

- **Naira Darius**

Social Team:

- **Sonja Bartolomei**
- April Strumpf
- Marsha Aaron
- Lisa Otterstrom
- Terry Hanford
- Susan Kart

New Member

Team

- **Jody Bartow**
- Beth Rosenthal

Photographers:

- **Diane Baker**
- Ann London

Button Maker:

- **Joan Wolf**

Nominating Head

- **Robin Mesnard**

Audit Team

- **Cathryn Meurer**
- Connie Lesch
- Rika Granger
- Barbara Freedman

WMG Journal:

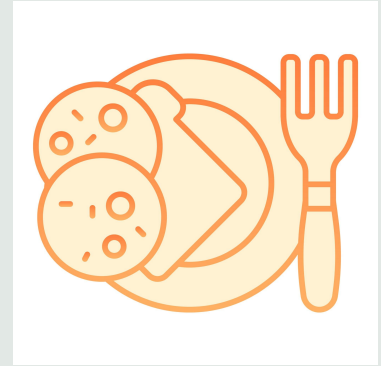
- **Elizabeth Toretsky**
- Adrienne Athanas
- Cathy Bamji
- Sheryl Isaacs
- Elizabeth Judd
- Harri Kramer
- Lisa Pinard
- Pat Remick
- Sherry Schweitzer

Book Sales:

- **Katie Meskill**
- Mary Brown
- Pat Remick
- Cathryn Meurer
- Kirstie Saltsman
- Diane Baker

Thanks to EVERYONE this year who:

- brought a snack; or
- worked the greeter table; or
- wrote a speaker recap



WMG asks **EACH member** to help **2x/semester**.

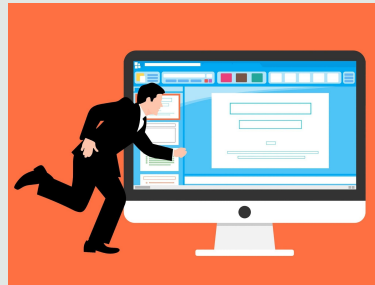
We have very few snack signups these next 2 weeks!

Please sign up, especially if you haven't brought yet. Thanks!

In Search of Web Designers This Summer!

Looking for web designers to help our web team refresh our website (WordPress) this summer or fall!

Please contact me or Kirstie at **wmgchair@gmail.com**



Vote to amend WMG Calendar to meet during

MCPS Professional Days

- This is a by-laws change
- In 2025-6, we would meet Wed, April 15, 2026
- Vote



MEMBERSHIP NUMBERS



- **2024-2025:** 242 members
- **2025-2026:** 250 members
224 renewals
+ 26 new members, incl 7 speakers
- **Waitlist:** 169 people

We will do what we can to reduce this waitlist number.

- **NOTE:** If speakers want to join the waitlist, they will now go in regular queue (not to top of waitlist).

Wednesday Morning Group Lecture Series 2

Balance Sheet Comparison

As of May 27, 2025

	TOTAL	
	AS OF MAY 27, 2025	AS OF MAY 27, 2024 (PY)
ASSETS		
Current Assets		
Bank Accounts		
Checking 2773 - 1	85,517.85	71,998.46
Total Bank Accounts	\$85,517.85	\$71,998.46
Other Current Assets		
Payments to deposit	0.00	
Total Other Current Assets	\$0.00	\$0.00
Total Current Assets	\$85,517.85	\$71,998.46
TOTAL ASSETS	\$85,517.85	\$71,998.46
LIABILITIES AND EQUITY		
Liabilities		
Total Liabilities		
Equity		
Opening balance equity	50,033.37	50,033.37
Retained Earnings	17,913.35	12,038.58
Net Income	17,571.13	9,926.51
Total Equity	\$85,517.85	\$71,998.46
TOTAL LIABILITIES AND EQUITY	\$85,517.85	\$71,998.46

Wednesday Morning Group Lecture Series 2

Balance Sheet

As of May 27, 2025

	TOTAL
ASSETS	
Current Assets	
Bank Accounts	
Checking 2773 - 1	85,517.85
Total Bank Accounts	\$85,517.85
Other Current Assets	
Payments to deposit	0.00
Total Other Current Assets	\$0.00
Total Current Assets	\$85,517.85
TOTAL ASSETS	\$85,517.85
LIABILITIES AND EQUITY	
Liabilities	
Total Liabilities	
Equity	
Opening balance equity	50,033.37
Retained Earnings	17,913.35
Net Income	17,571.13
Total Equity	\$85,517.85
TOTAL LIABILITIES AND EQUITY	\$85,517.85

Wednesday Morning Group Lecture Series 2

Profit and Loss

July 1, 2024 - May 27, 2025

	TOTAL
Income	
Book Income	4,187.00
Total Income	\$4,187.00
GROSS PROFIT	\$4,187.00
Expenses	
Advertising & marketing	371.96
Book Expense	4,126.94
Entertainment with clients	7,730.64
General business expenses	
Bank fees & service charges	
Bank Fees	20.00
Book Fees - Quickbooks	47.91
Total Bank fees & service charges	67.91
Total General business expenses	67.91
Insurance	2,141.00
Office expenses	142.89
Office supplies	8.19
Software & apps	1,066.60
QuickBooks Subscription	365.00
Total Software & apps	1,431.60
Total Office expenses	1,582.68
Supplies	547.46
Supplies & materials	310.85
Total Supplies	858.31
Total Expenses	\$16,879.44
NET OPERATING INCOME	\$ -12,692.44
Other Income	
Other income	30,388.57
Refunds to customers	-125.00
Total Other Income	\$30,263.57
NET OTHER INCOME	\$30,263.57
NET INCOME	\$17,571.13

How are dues spent?



- 50% rent
- 35% social events
- 15% insurance, bank fees, website, MembershipWorks database, office and snack supplies



New Business?

Fall Start Date:
Wed, Sept 3, 2025